



STS

Fibre Cement Construction Board

EWI | Direct Render | Sheathing | Façades

WWW.STS-UK.COM | 0113 2022010 | SALES@STS-UK.COM



**STEEL &
TIMBER
FRAME**



**CLASS
A1**
Fire Rated



**SUITABLE
OVER
18m**



Healthcare | Education | Housing | Student Accommodation
Defence | Offsite | Modular | Commercial



STS offers the *ultimate* Render Carrier and Sheathing Board solution for both Timber Frame and SFS construction types including Modular/Offsite.

The STS Construction Board is an A1 Fire Rated Fibre Cement Board suitable for both Low and High Rise buildings, including above 18m.

To complement our boards, we also stock a range of professional Fixing Essentials including Joint Sealing Tape, Screws and Cutting Blades. These are designed to ensure a fast and easy fit whilst leaving the installer with complete peace of mind.

Weather Resistant

Airtight

A1 Non Combustible

Impact Resistant

Accepts Direct Fixing

Termite Resistant

High Dimensional Stability

Direct Render Ready

Cutting Fibre Cement

PCD Blade

SKU: 6316 (160mm)

SKU: 6318 (180mm)

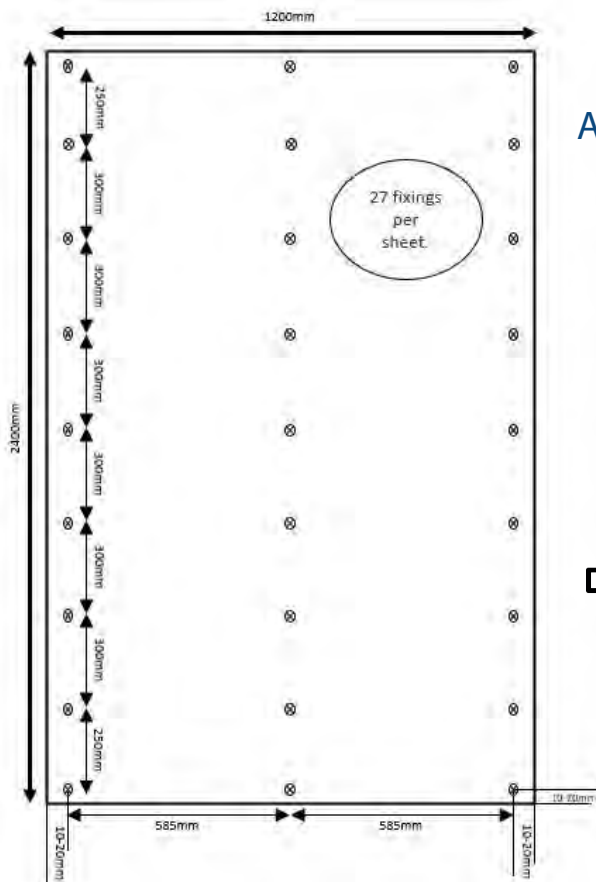


TCT Jigsaw Blade

SKU: 6303 (100mm)



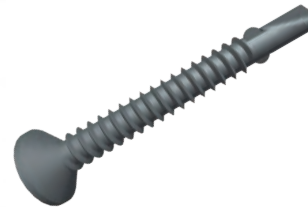
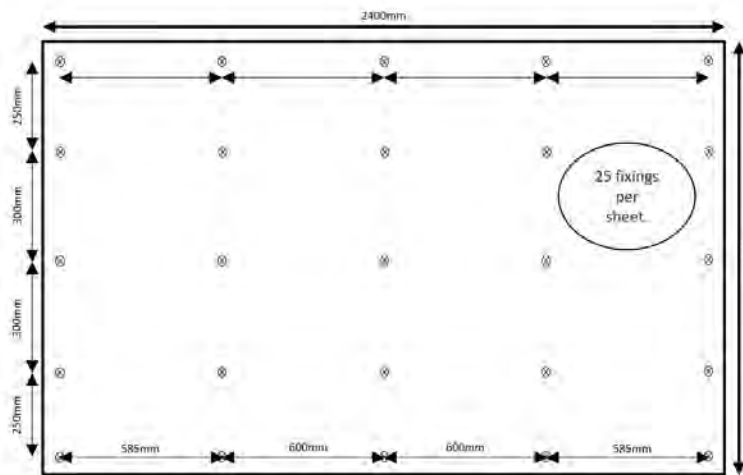
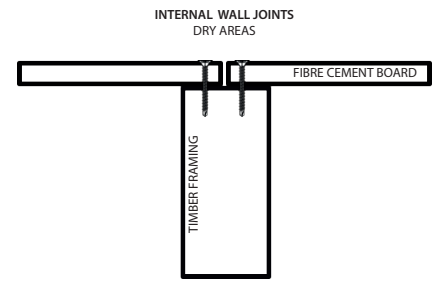
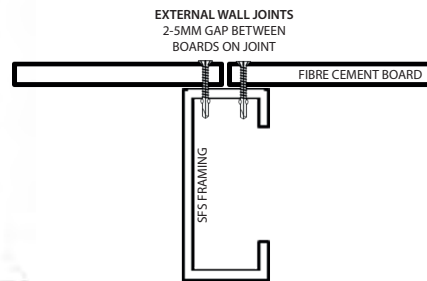
Fixing Detail



Key fixing detail points

All fixings must be 10mm – 20mm away from the edge of the board.

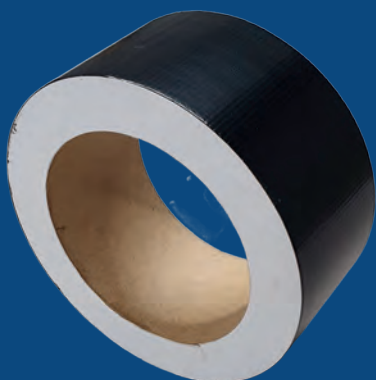
Nominal 2mm – 5mm joint gap between boards on external installations.



FOR FIXING INTO SFS
4.8mm x 38mm
Wingtip Tek Screw
SKU: 5541 | BOX QTY: 200



FOR FIXING INTO TIMBER
4.8mm x 38mm
Rustpert Coated Screw
SKU: 5638 | BOX QTY: 250



External Sheathing Tape

Tape Width: 50mm

Role Length: 20m

SKU: 5851



The STS Construction Board is a high performance, fibre cement, Class A1 Fire Rated, building board used in external applications in the EWI, Render, Sheathing & Façades industry.

The STS Construction Board is suitable for both Timber Frame and Steel Frame Structures (SFS) and can withstand fluctuations in temperature and climate.

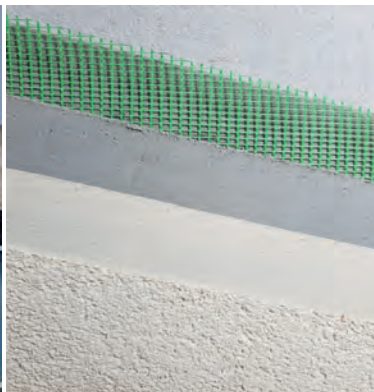
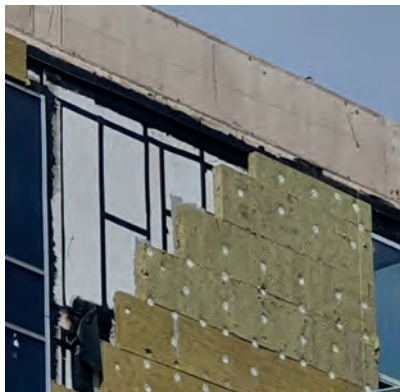
Area Of Performance	12mm Board	9mm Board
Sheet Size	1200x800mm & 2400x1200mm	1200x800mm & 2400x1200mm
Board Weight	15.2kg & 45kg	12.8kg & 39.5kg
Test Standard	BS EN 12467:2016 & A1:2016	BS EN 12467:2016 & A1:2016
Thermal Conductivity	0.2435 W/M.k	
R Value	0.0493 M ² K/w	
Pull Out Testing	Mean Result: 840 (Newtons)	
Pull Through Testing	Mean Result: 1650 (Newtons)	
Bend Strength (wet)	12.91 MPa	14.93 MPa
Bend Strength (dry)	12.46 MPa	17.27 MPa
Reaction To Fire	EuroClass A1 Non-Combustable	EuroClass A1 Non-Combustable
Fire Insulation	BS 467 part 22	
Density	1.35g/cm ³	1.28g/cm ³

ZERO
GYPSUM

ZERO
CHLORIDE

BS EN
12467

UK
CA



APPROVED PARTNERS

